

# Hep C Elimination Program

**CENTRAL CITY CONCERN**

Arsalan Shah, PharmD

# Disclosures

---

- Arsalan Shah has no actual or potential conflict of interest in relation to this program/presentation.

# WORKFLOW

## Supportive Housing

Onsite supportive services to aid with recovery, mental health and other challenges that might be barriers.

## Low Barrier Housing

Meeting people where they are with immediate, accessible housing.

## Transitional Housing

People stay from six months up to two years as they gain stability.

## Permanent Housing

Permanent, affordable housing for people who need an added layer of assistance.

## Residential Care

Hooper Detoxification and Stabilization Center  
Recuperative Care Program

## Integrated Care Centers

Blackburn Clinic  
Old Town Clinic  
Hep C Clinical Pharmacy

## Puentes

Outpatient mental health and addiction treatment for the Latinx/Hispanic community and non-English speakers.

## Community Partners

Opioid Treatment Centers  
Syringe Exchange Programs  
In Patient Treatment Centers

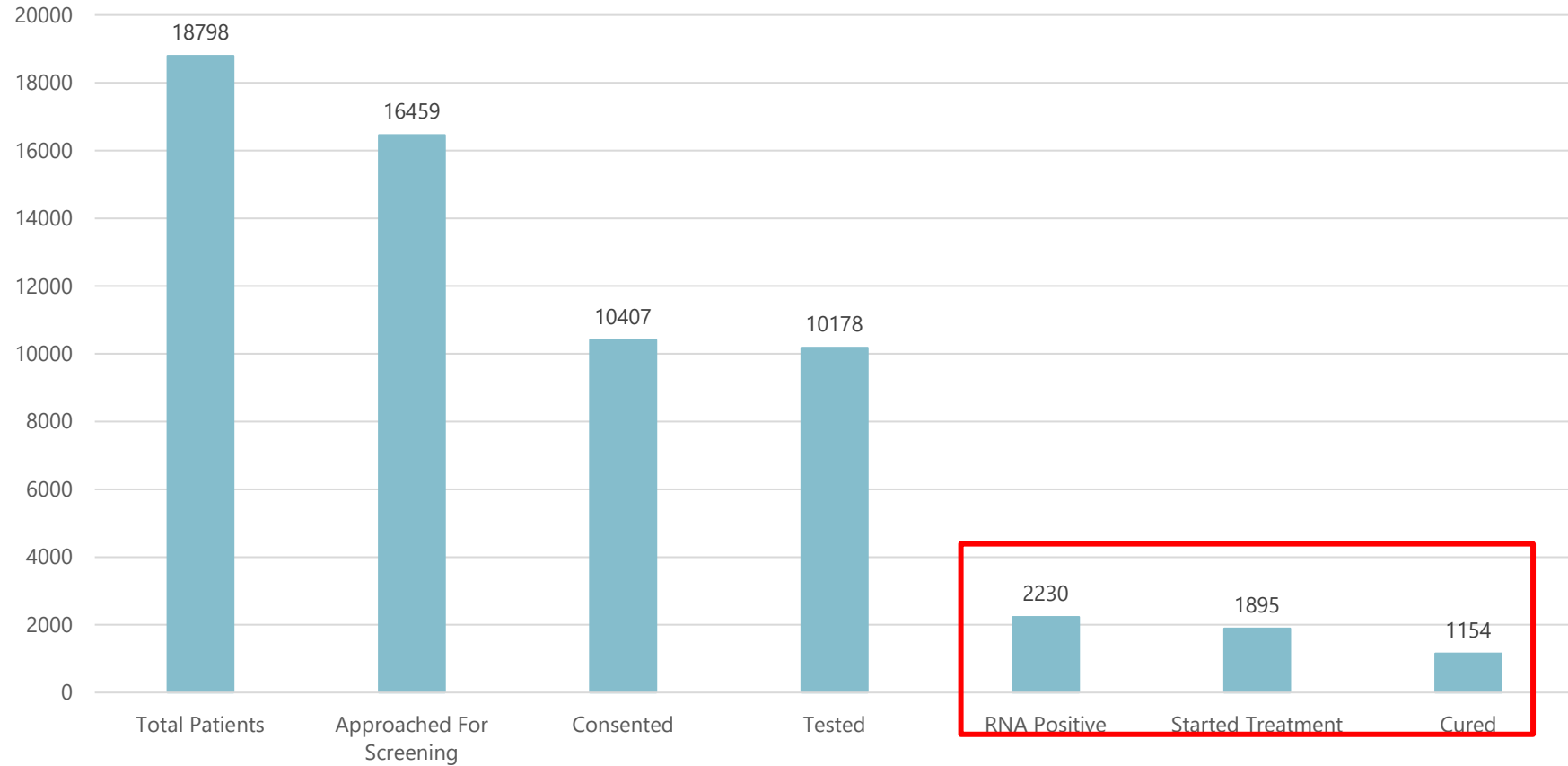


CENTRAL CITY  
CONCERN

HOMES HEALTH JOBS

# Hep C Care Cascade

Hep C Care Cascade 5-1-17 to 9-31-23

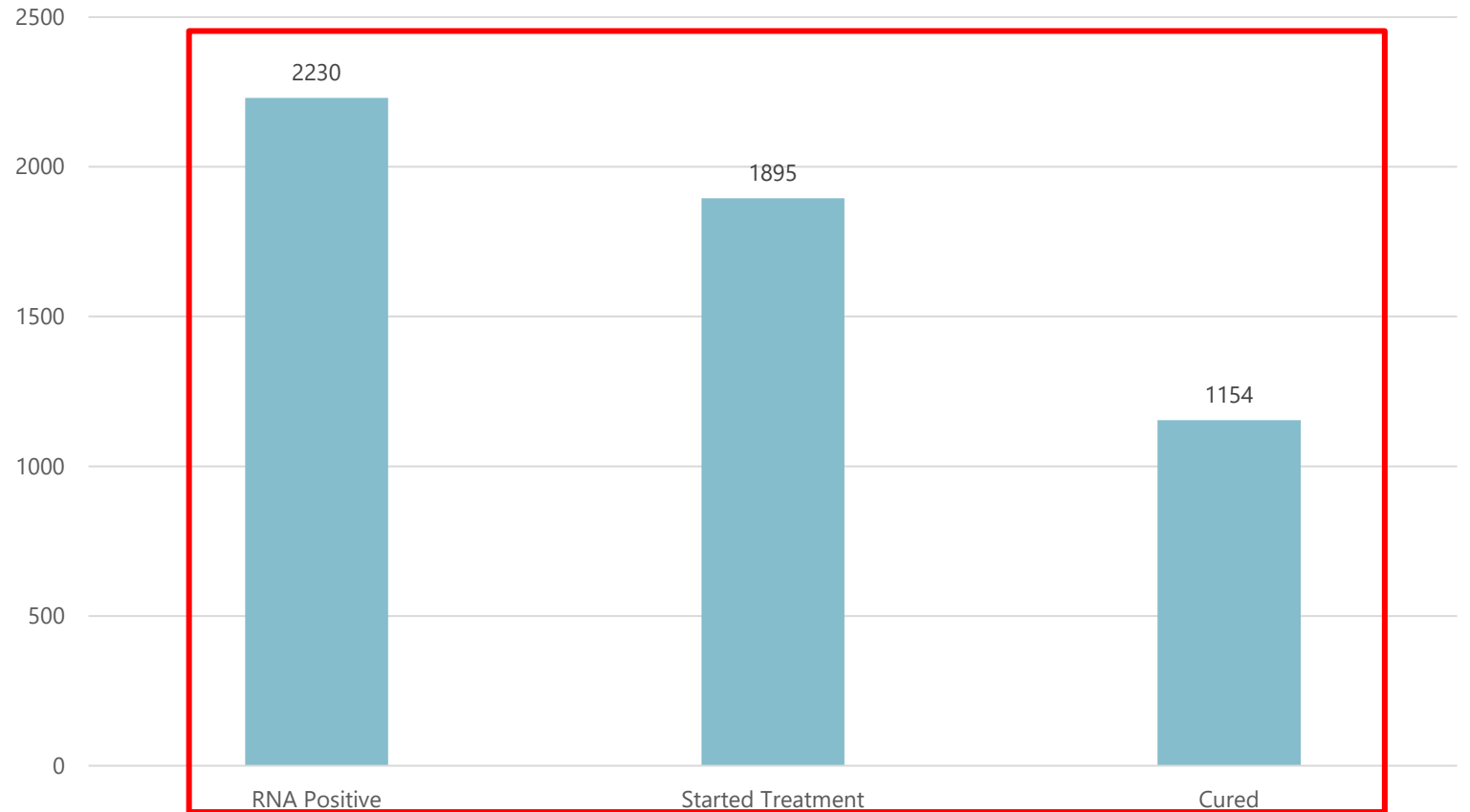


22% RNA Positivity

# Care Cascade Continued

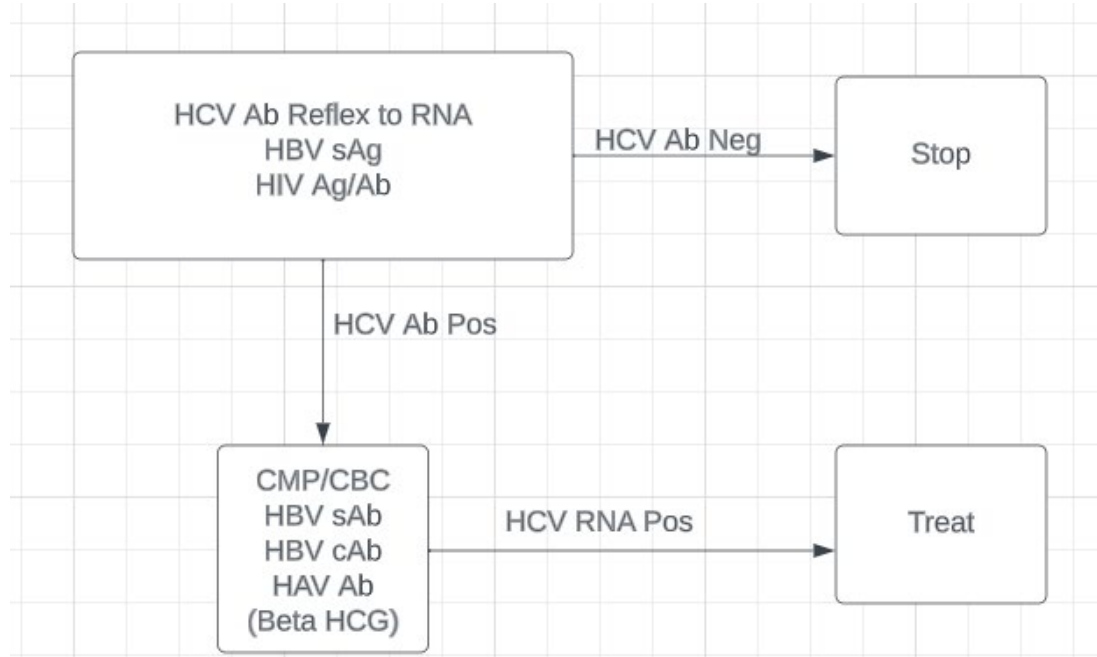
85% Linkage to Care  
91% of patients finishing treatment  
93% Cure Rate

Hep C Care Cascade 5-1-17 to 9-30-23

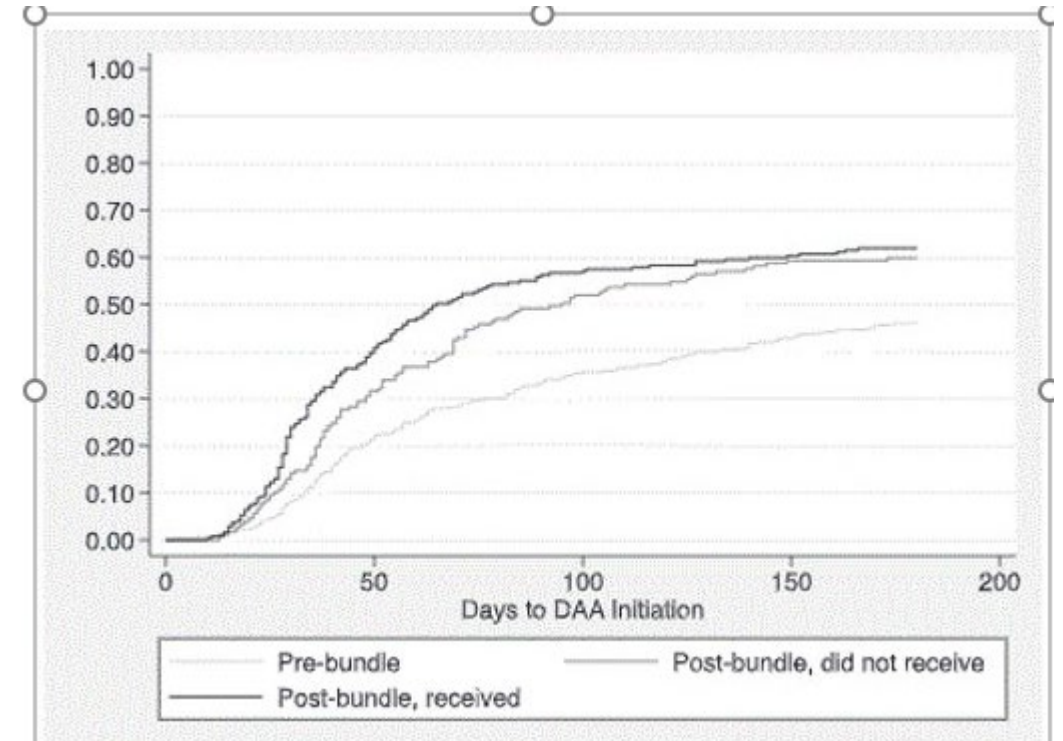


# Screening to treatment, one lab draw

## Screening-to-treatment lab bundle\*



## Lab bundle decreases time-to-treatment\*



**Kaplan-Meier Curve, receipt of treatment**

# “Treatment Ready” Dried Blood Spot

HCV Ab Reflex, HCV RNA,  
HIV Ag/Ab, HBV sAg



HBV cAb Total, Serum  
Separator Card

HCV RNA: 100% Sensitivity and  
specificity at viral load 600IU  
Approved for self-testing  
Fingerstick=flexible testing settings  
The average time to result in 6 days

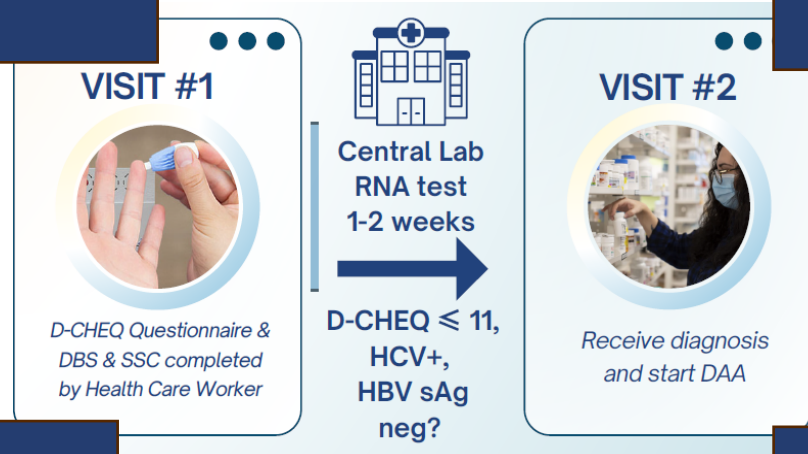


100% sensitivity and specificity  
Approved for self-testing  
Fingerstick=flexible testing settings  
Average time to result 7 days

# DBS Test and Treat ( TaT) Model of Care

D-CHEQ: Decompensated Cirrhosis in Hepatitis C Screening Questionnaire

Scored from 4-15  
100% sensitive in ruling out decompensated cirrhosis at D-CHEQ >8.

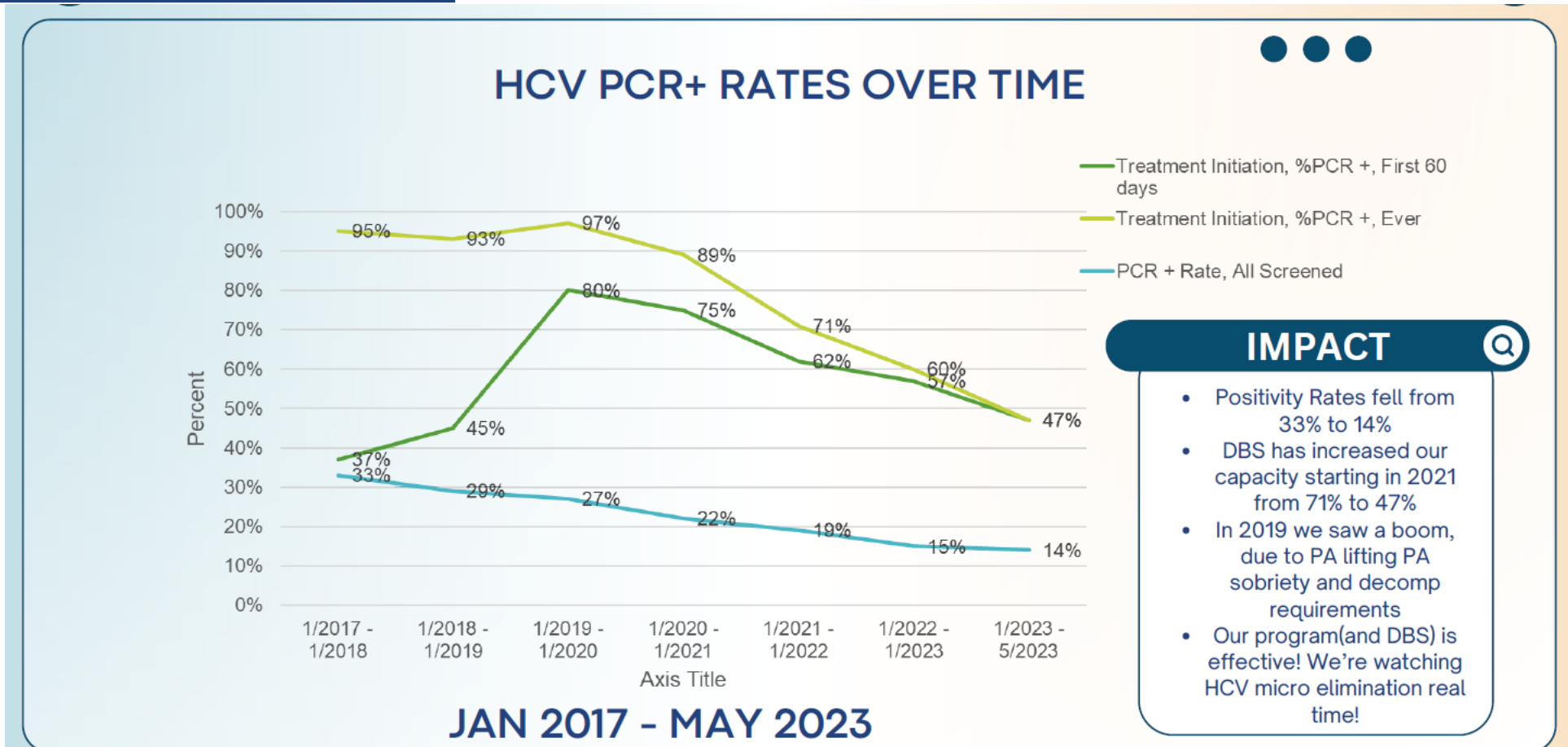


Four questions  
Age  
Alcohol Use  
Prior liver disease/complications

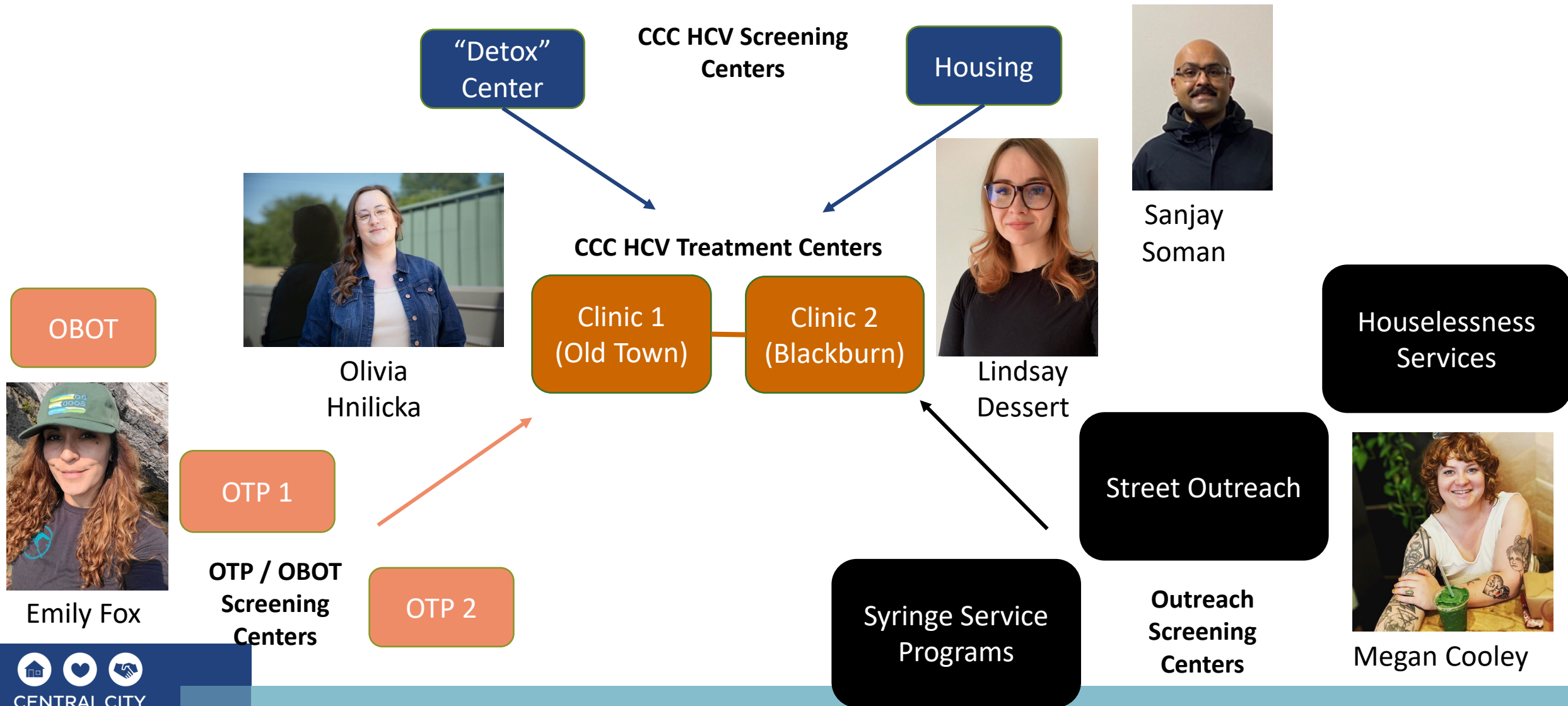
Retrospective analysis of 1746 DAA treatments  
35 decomp cirrhosis  
130 randomized controls



# HCV PCR+ Rates overtime



# Relationships are the core of Elimination





CENTRAL CITY  
**CONCERN**

HOMES HEALTH JOBS

# Questions